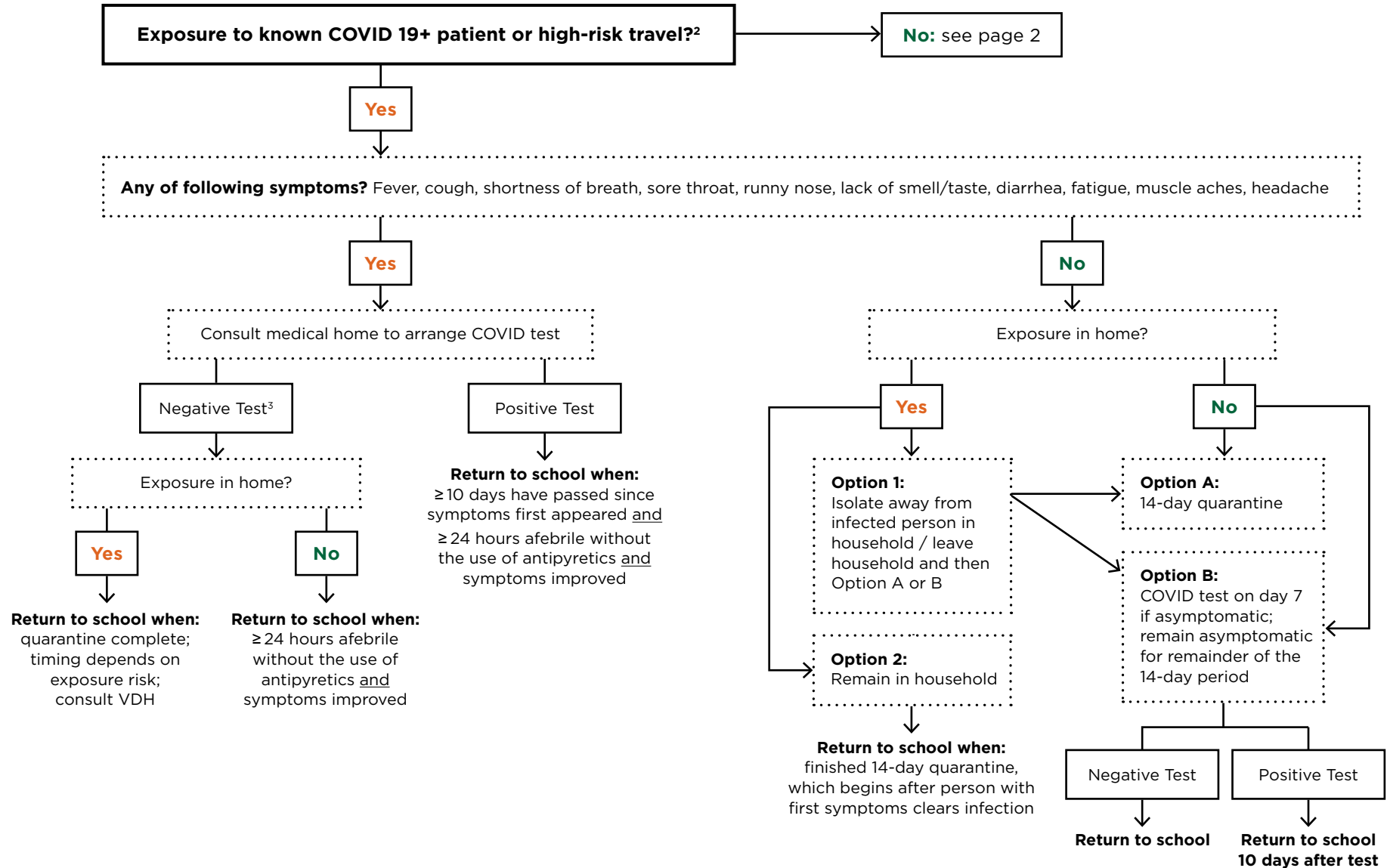


# COVID-19 in Pediatric Patients:

## Triage, Evaluation, Testing and Return to School (Pre-K - Grade 12)<sup>1</sup>



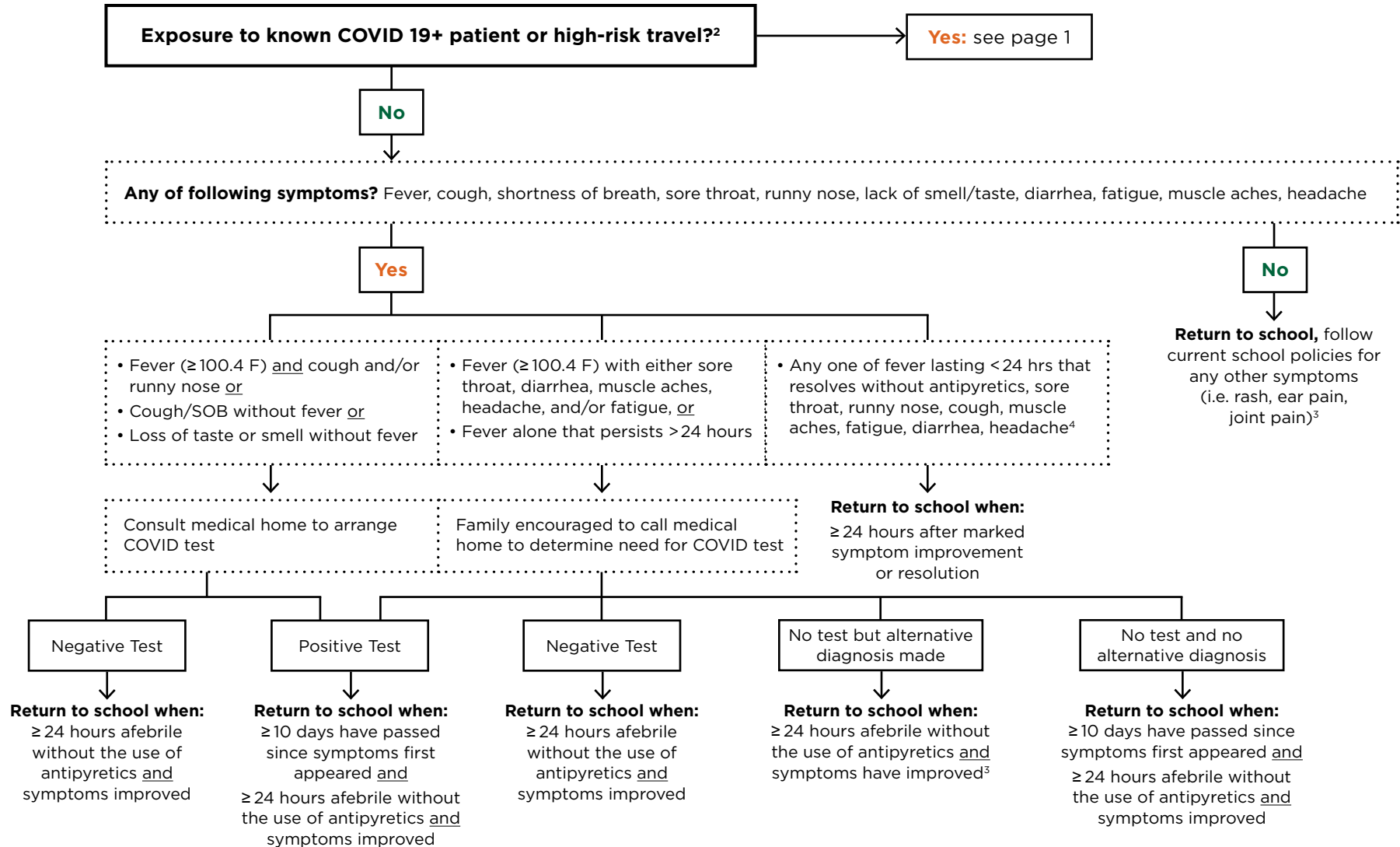
<sup>1</sup>This algorithm was developed in the setting of Vermont's low prevalence of SARS-CoV-2 Virus. This is a changing environment, and as we gain new knowledge about this virus, expect adaptations

<sup>2</sup>Exposure/travel: had close contact (within 6 feet of an infected person for at least 15 minutes) with a person with confirmed COVID-19; or traveled to or lived in an area where the local, Tribal, territorial, or state health department is reporting large number of cases of COVID-19 <https://accd.vermont.gov/covid-19/restart/cross-state-travel>

<sup>3</sup>If highly suspect COVID, may repeat test in 24 hours

# COVID-19 in Pediatric Patients:

## Triage, Evaluation, Testing and Return to School (Pre-K - Grade 12)<sup>1</sup>



<sup>1</sup>This algorithm was developed in the setting of Vermont's low prevalence of SARS-CoV-2 Virus. This is a changing environment, and as we gain new knowledge about this virus, expect adaptations

<sup>2</sup>Exposure/travel: had close contact (within 6 feet of an infected person for at least 15 minutes) with a person with confirmed COVID-19; or traveled to or lived in an area where the local, Tribal, territorial, or state health department is reporting large number of cases of COVID-19 <https://accd.vermont.gov/covid-19/restart/cross-state-travel>

<sup>3</sup>Consult usual infectious disease protocols (e.g. Red Book or Caring for Our Children)

<sup>4</sup>Rash alone, including purple tones, is not currently a CDC listed symptom of acute COVID-19 infection